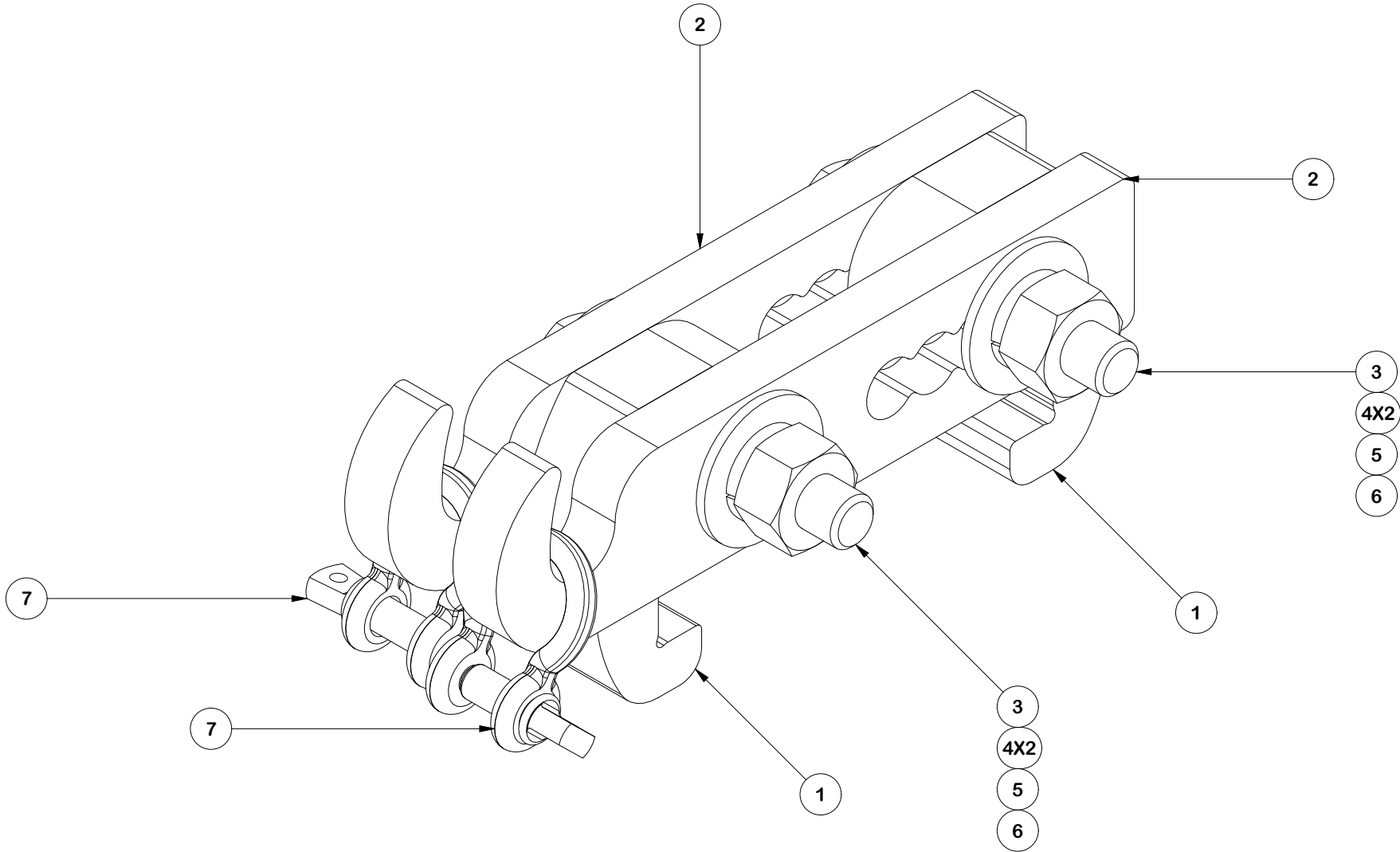


PARTS LIST						
ITEM	QTY	PART NO.	PART DESCRIPTION	LENGTH	UNIT WT.	NET WT.
1	2	X-HHR-HANGH	1" MILL PLATE (A572 GR50)	12 in	1.14	2.29
2	2	X-HHR-HANGL	1/2" MILL PLATE (A572 GR.50)	12 in	1.34	2.68
3	2	G1203	1/2" x 3" HDG HEX BOLT GR5 FULL THREAD	3 in	0.22	0.43
4	4	G12FW	1/2" HDG USS FLATWASHER	3/32 in	0.03	0.14
5	2	G12LW	1/2" HDG LOCKWASHER	1/8 in	0.01	0.03
6	2	G12NUT	1/2" HDG HEAVY 2H HEX NUT		0.07	0.14
7	2	SHK14	1/4" SCREW PIN SHACKLE		0.10	0.21
					TOTAL WT. #	5.92



FINISH:
HOT DIP GALVANIZED.

TOLERANCE NOTES

TOLERANCES ON DIMENSIONS, UNLESS OTHERWISE NOTED ARE:
SAWED, SHEARED AND GAS CUT EDGES ($\pm 0.030"$)
DRILLED AND GAS CUT HOLES ($\pm 0.030"$) - NO CONING OF HOLES
LASER CUT EDGES AND HOLES ($\pm 0.010"$) - NO CONING OF HOLES
BENDS AND ANGLES ARE $\pm 1/2$ DEGREE
ALL OTHER MACHINING ($\pm 0.030"$)
ALL OTHER ASSEMBLY ($\pm 0.060"$)

PROPRIETARY NOTE:
THE DATA AND TECHNIQUES CONTAINED IN THIS DRAWING ARE PROPRIETARY INFORMATION OF VALMONT INDUSTRIES AND CONSIDERED A TRADE SECRET. ANY USE OR DISCLOSURE WITHOUT THE CONSENT OF VALMONT INDUSTRIES IS STRICTLY PROHIBITED.

DESCRIPTION

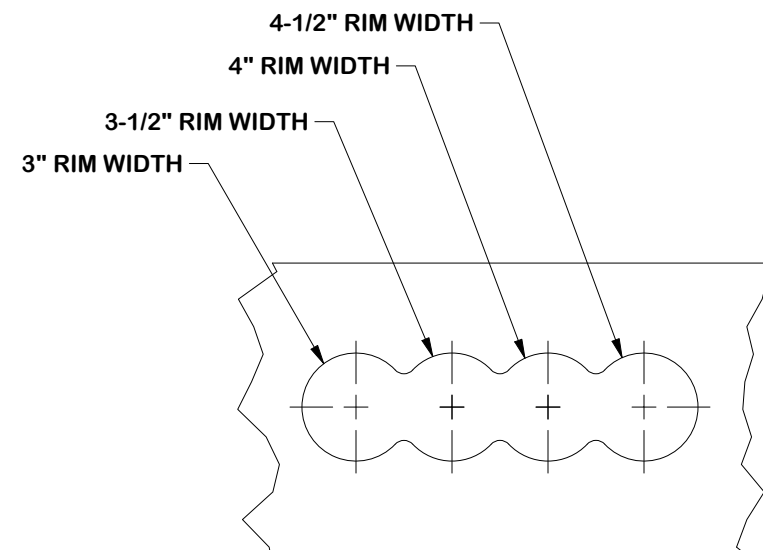
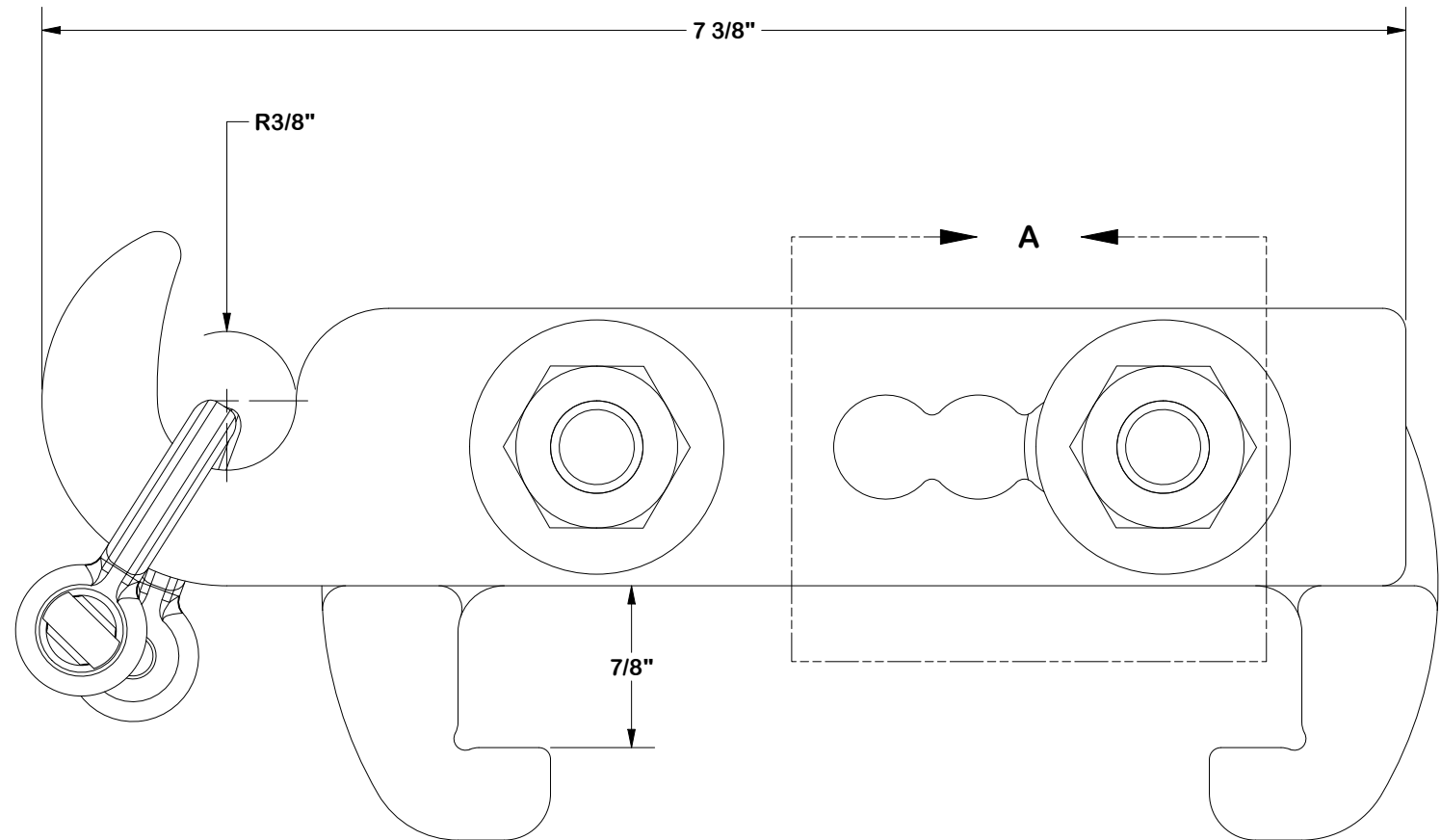
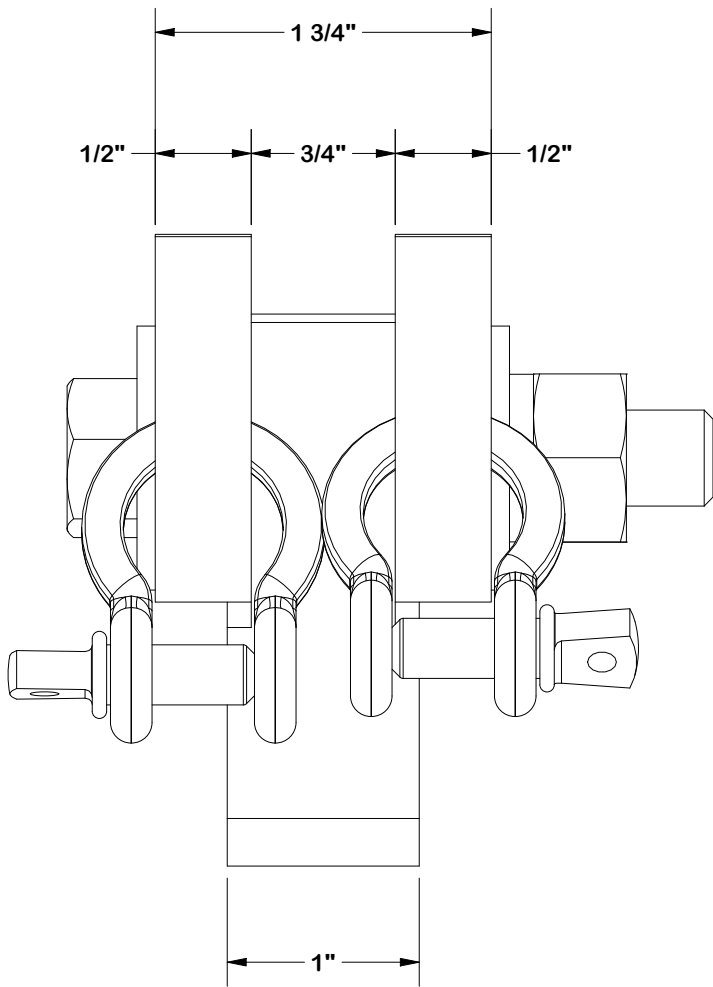
PORT HOLE HANGER KIT W/ 1/4" SHACKLES

CPD NO.		DRAWN BY CMFL 5/10/2023		ENG. APPROVAL	
CLASS 87	SUB 02	DRAWING USAGE CUSTOMER		CHECKED BY	



Engineering
Support Team:
1-888-753-7446

PART NO.	PHH-AL-SP14
DWG. NO.	PHH-AL-SP14



DETAIL A
BOLT PLACEMENT

TOLERANCE NOTES

TOLERANCES ON DIMENSIONS, UNLESS OTHERWISE NOTED ARE:
SAWED, SHEARED AND GAS CUT EDGES ($\pm 0.030"$)
DRILLED AND GAS CUT HOLES ($\pm 0.030"$) - NO CONING OF HOLES
LASER CUT EDGES AND HOLES ($\pm 0.010"$) - NO CONING OF HOLES
BENDS AND ANGLES ARE $\pm 1/2$ DEGREE
ALL OTHER MACHINING ($\pm 0.030"$)
ALL OTHER ASSEMBLY ($\pm 0.060"$)

PROPRIETARY NOTE:
THE DATA AND TECHNIQUES CONTAINED IN THIS DRAWING ARE PROPRIETARY INFORMATION OF VALMONT INDUSTRIES AND CONSIDERED A TRADE SECRET. ANY USE OR DISCLOSURE WITHOUT THE CONSENT OF VALMONT INDUSTRIES IS STRICTLY PROHIBITED.

DESCRIPTION
PORT HOLE HANGER KIT W/ 1/4" SHACKLES

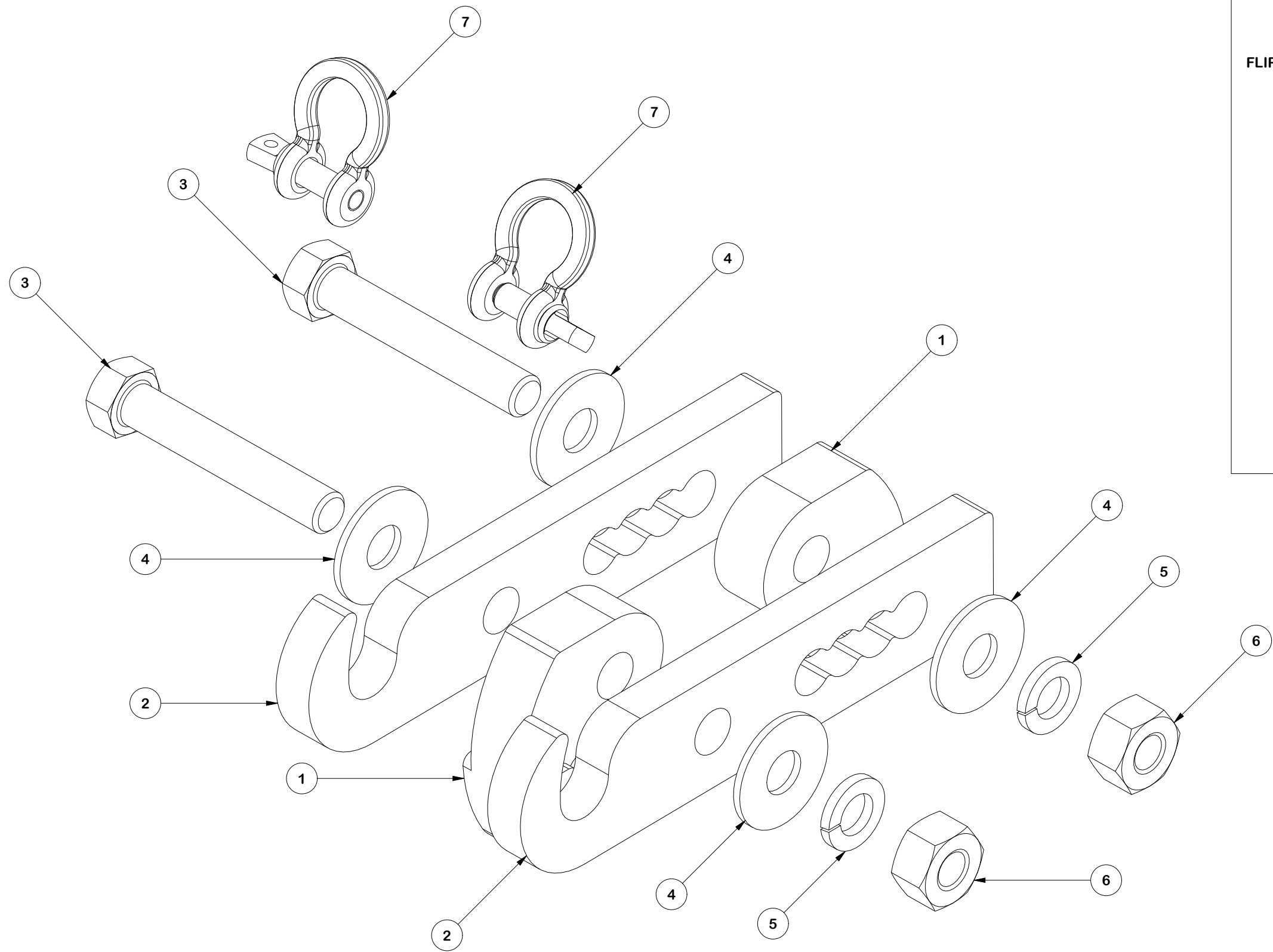
CPD NO.		DRAWN BY CMFL 5/10/2023		ENG. APPROVAL
CLASS 87	SUB 02	DRAWING USAGE CUSTOMER		CHECKED BY

SITE PRO 1

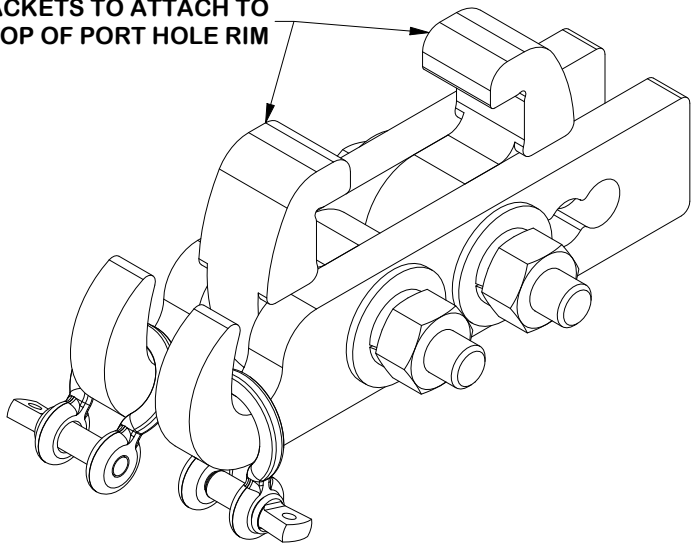
A valmont COMPANY

Engineering Support Team:
1-888-753-7446

PART NO. PHH-AL-SP14	PAGE 2 OF 3
DWG. NO. PHH-AL-SP14	



FLIP BRACKETS TO ATTACH TO
TOP OF PORT HOLE RIM



ALTERNATE CONNECTION

TOLERANCE NOTES

TOLERANCES ON DIMENSIONS, UNLESS OTHERWISE NOTED ARE:
SAWED, SHEARED AND GAS CUT EDGES ($\pm 0.030"$)
DRILLED AND GAS CUT HOLES ($\pm 0.030"$) - NO CONING OF HOLES
LASER CUT EDGES AND HOLES ($\pm 0.010"$) - NO CONING OF HOLES
BENDS AND ANGLES ARE $\pm 1/2$ DEGREE
ALL OTHER MACHINING ($\pm 0.030"$)
ALL OTHER ASSEMBLY ($\pm 0.060"$)

PROPRIETARY NOTE:
THE DATA AND TECHNIQUES CONTAINED IN THIS DRAWING ARE PROPRIETARY INFORMATION OF VALMONT INDUSTRIES AND CONSIDERED A TRADE SECRET. ANY USE OR DISCLOSURE WITHOUT THE CONSENT OF VALMONT INDUSTRIES IS STRICTLY PROHIBITED.

DESCRIPTION
PORT HOLE HANGER KIT W/ 1/4" SHACKLES

CPD NO.		DRAWN BY CMFL 5/10/2023		ENG. APPROVAL	
CLASS 87	SUB 02	DRAWING USAGE CUSTOMER		CHECKED BY	



Engineering
Support Team:
1-888-753-7446

PART NO.	PHH-AL-SP14
DWG. NO.	PHH-AL-SP14